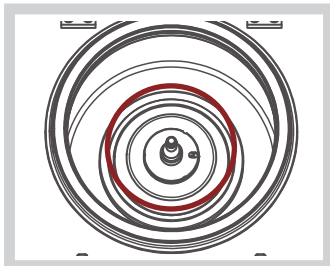


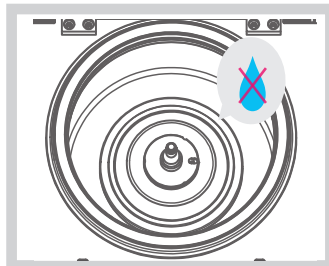
# Precaution before Operating the Centrifuge

HIGH SPEED REFRIGERATED CENTRIFUGE  
**CR-1730R**



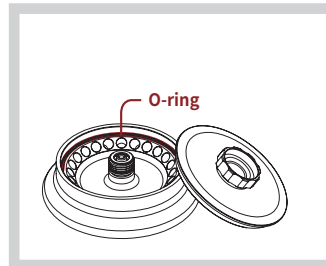
## Motor Shaft & Rotor

Clean the motor shaft.  
Remove the foreign substances  
not to cause any vibration



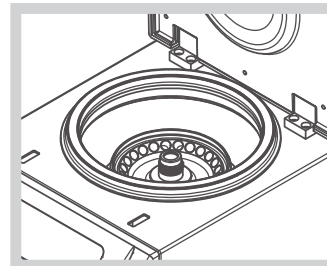
## Open the lid after every use

Keep the instrument dry after use  
for prolonged durability.  
Take the rotor out and clean the shaft  
with the dry soft cloth.



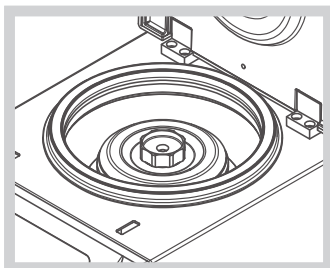
## O-ring Maintenance

Check the O-ring is put on the right place  
of the rotor. Make the rotor lid loose when  
not using the centrifuge which is for pro-  
longed durability of O-ring.



## Rotor checking

Check the rotor is installed correctly  
and is sitting firmly on the motor shaft.



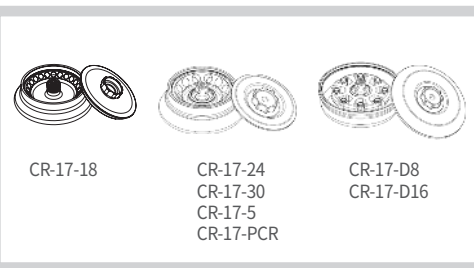
## Snap fit button checking

Close the snap fit button  
with aligning with the motor shaft.



## Loading tubes

Load the sample tubes symmetrically

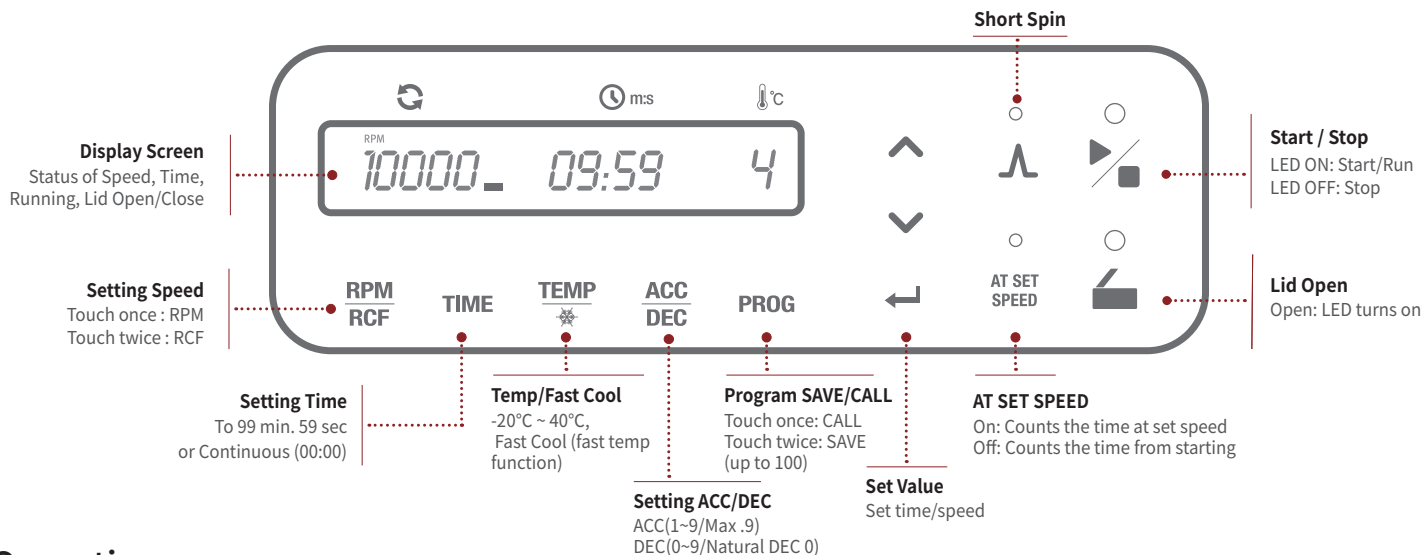


## Interchangeable Rotors

The centrifuge offers multiple rotor options and can be changed  
rotors in the described

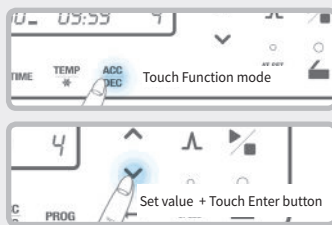
# Display & Control Panel Quick Guide

HIGH SPEED REFRIGERATED CENTRIFUGE  
CR-1730R

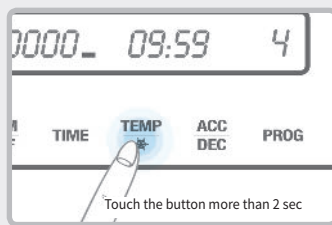


## Operation

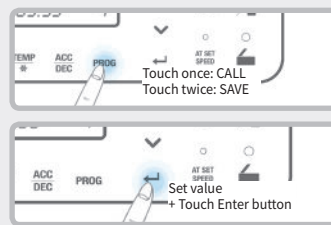
Function Selection



Fast Cool(fast temp)



PROG Save/Call



Start / Stop

