

Vial Labeling



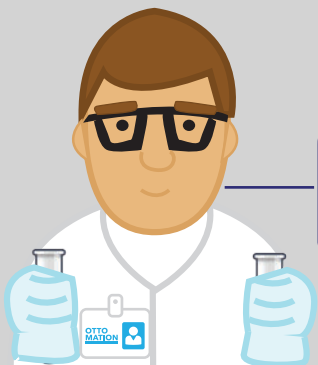
SCI-PRINT SOLO

SEMI-AUTOMATED VIAL LABELER

The Sci-Print SOLO (model # 1045) is used for manual labeling of tubes ranging from 0.5 mL to 50 mL. The Sci-Print SOLO is commonly integrated into larger automated systems such as the Tecan EVO.

FEATURES & BENEFITS

- Easily integrates into third party systems
- Handle multiple vial types with same system
- 1D and 2D barcode scanner for data lookup or validation (optional)
- Increase productivity & efficiency
- Consistency of label placement
- Eliminate human error
- Reduce repetitive injuries
- Small footprint saves valuable space in the lab

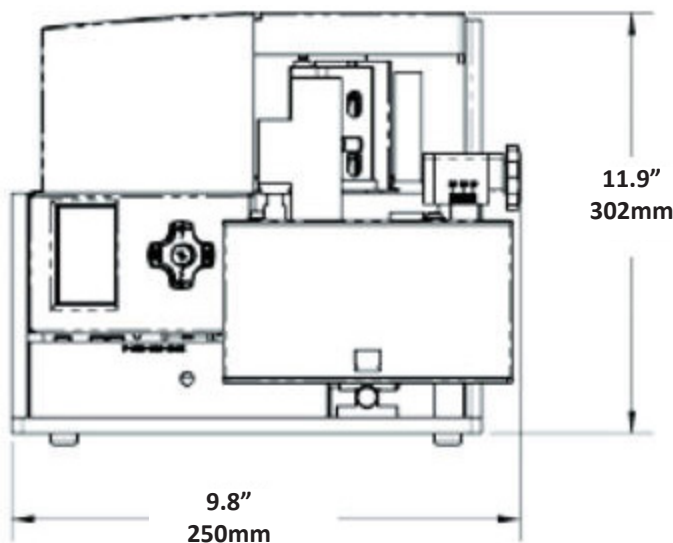


Contact us for more info!
314-298-9800
info@scinomix.com
scinomix.com

SCI-PRINT SOLO SPECIFICATIONS

System Requirements	Windows 7/8/8.1/10 .NET 4.5.1 framework
Network Requirements	Requirements dependent on software version. May need RS232 or ethernet.
Air Requirements	80-90 PSI @ 1 CFM. The air supply must be oil/contaminant free, with an inline regulator and air dryer.
Power Requirements	110-240 VAC 50/60 Hz 80W (Max)
Transport & Storage Temperature	-20 degrees C to +55 degrees C (20% to 80% non-condensing)
Operating Environment	<i>(Indoor use only)</i> Temperature: 10 degrees C to 32 degrees C Humidity: 20% to 80% non-condensing Altitude: Up to 2000M Main Supply: +/- 10% Rated Voltage Transient overvoltage: Installation Category (Overvoltage category) II Rated pollution: Pollution degree II
Physical Dimensions	Length (when label arm is not extended): 29.8" (757mm), Length (short travel extension): 24.2" (614mm), Length (long travel extension): 31.6" (802mm), Width: 11.9" (302mm), Height: 9.8" (250mm), Weight: 27lbs
Labeling Rate	4 seconds per tube
Tube Requirements	Volume range: 0.5 mL to 50 mL, Max Height: 120 mm, Max Diameter: 35 mm
Certifications	CE

Front View



Side View

